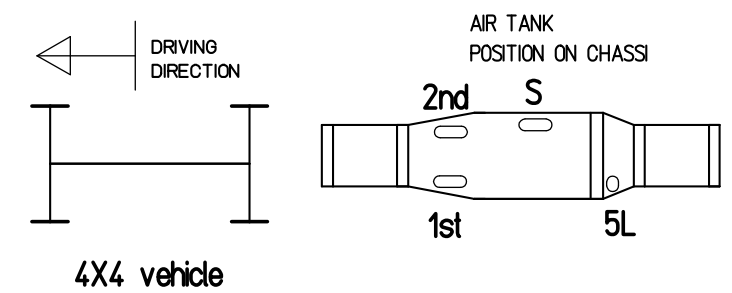


ABS E8 UNIT cod. 446.003.827.0 0011328
 cavo ASR - 449.515.100.0 00104068
 cavo ABS - possiamo farli noi



- = RILSAN Ø 16x2 mm
- - - - = RILSAN Ø 12x1.5 mm
- - - - - = RILSAN Ø 6x1 mm
- - - - - = FROM COMPRESSOR
- ⊕ = CONNECTION FØ16 / 12
- ⊕ = CONNECTION 90Ø16 / 15 / 6
- ⊕ = CONNECTION DØ16 / 12
- ⊕ = CONNECTION 45Ø16
- ⊕ = CONNECTION TØ16 / 12 / 8

POS.	DESCRIPTION	Q.ty
24	Disc brake MAX 22 LEFT SIDE 640.322.102.0 00107169	1
23	Disc brake MAX 22 RIGHT SIDE 640.322.103.0 00107170	1
22	Automatic Drain valve 934.301.003.0 00101855	1
21	Air tank for drier 5 l SMA aluminium cod. 4A1550053	1
20	APU - Air drier and guard system protection 932.500.015.0 00093013	1
19	Sensor ABS kit 441.032.921.2 00106929	4
18	Silencer WABCO 432.407.015.0 00088964	1
17	ASR - differential electrovalve 472.170.606.0 00099662	1
16	Electrovalve ABS WABCO 472.195.039.0 00107164	4
15	Front / Rear axle tank 25L SMA aluminium cod. 4A2460254A	2
14	Low pressure switch and indicator N.C. IMS93519	2
13	Parking brake	1
12	Two way valve 434.208.029.0 00087037	1
11	Servive - electrovalve NC 00112201 (kit wepico)	1
10	Auxiliary service tank 20 l SMA aluminium cod. 4A2460204	1
9	Air tank drier 932.399.000.0 00080399	1
8	Relay valve 973.011.004.0 00107258	2
7	Drain valve WABCO 934.300.001.0 00080403	4
6	Tristop WABCO 423 505 121 0 RIGHT SIDE 00107172	2
5	Tristop WABCO 423 505 120 0 LEFT SIDE 00107171	2
4	Parking brake hand level WABCO 961 723 064 0 00109292	1
3	Air pressure check control WABCO 463.703.120.0 00087036	8
2	Compressor on Scaria DC13 - traction engine	1
1	Brake pedal 480.002.123.0 00109321 o 00088740	1

La FRESIA S.p.a. si riserva a termini di legge la proprieta' di questo disegno con divieto di riprodurlo o comunicarlo a terzi senza autorizzazione scritta.
 As by law enacted, FRESIA S.p.A. reserves the property of this drawing. No reproduction or diffusion without written authorization.

Tolleranze ed altre prescrizione generali FRESIA - Standar 1-2001 -
 General tolerances and other specifications

FRESIA s.p.a.
 17017 - MILLESIMO (SV) Italy

Q.TA Nr. .
 DATA Date 30/07/2024
 MASSA Masse
 SCALA Scale

DIS.RE Name **D.R.**
 CAD HEWLETT Drawing **PACKARD**

SOST.it N° Rep. for -
 SOST.dat N° Rep. by .

TIPO Type **F2000M - JAPAN**
 CODICE Code Nr. -

N° / Nr **33078**

FOGLIO Sheet **1/1**

MATERIALE / Material
 DESIGNAZIONE / Designation
ABS E8 - brake system F2000 MAXI